

Walking in the Word

Official Newsletter of the Central States Synod Women of the ELCA

The Road To...CSS W/ELCA Convention 2018

On the Inside

May the Spirit guide you Alice Burnett	2
Help us plan for 2019 convention Beth Rockelman	2
Convention resolution	2
PME/A program	2
2018-19 CSS W/ELCA board photos/biographies	3
Reach out to others Rev. Dinah Dutta	4
In-kind offerings benefit service organizations	4
Convention photos	4
CSS W/ELCA websites	4
Help us communicate Anna Prockish	5
Cluster coordinators discuss challenges Kara Jecha	5
Financial Pearls Vickie Donnell	5
Labyrinth provided pathway for prayer	6
Thank you from scholarship winner	6
First-time attendees receive grant	6
Kansas cluster meetings	7
Cluster coordinators	7
Convention photos	8
CSS W/ELCA officers, board	9
Subscription form	10

Bishop Roger Gustafson joined the 31st CSS W/ELCA Convention by addressing the group Friday evening and again on Saturday. In his message, he expounded on the convention theme, "The Road To..." and the corresponding Bible verse: "Lord, I will follow you wherever you go." - Luke 9:57.

A RECAP

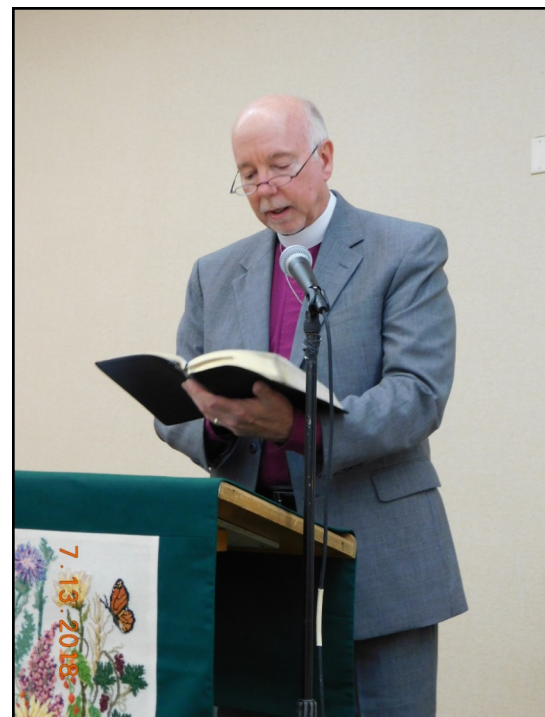
"When you travel the road with Jesus, you must let Jesus choose the destination. As you travel the road, take courage and confidence in the one who travels with you," said Rev. Gustafson

The ELCA Central States Synod Bishop told those attending that it is never too late and we are never too old to develop our faith.

"What matters most is with whom we travel the road. Jesus is the one who knows the way," he said.

The convention held July 13-15 at Roach, MO had fewer participants than in past years. However, the 73 women compensated with joyful singing, enthusiastic welcoming of new attendees, and reuniting with their sisters in Christ.

While the 29 voting members (delegates) attended the business meeting, non-voting members attended the service and fun projects. Nadine Melgren, organizer of the



Bishop Roger Gustafson

LWR diapers service project, said the ladies cut up dozens and dozens of T-shirts into diapers. The T-shirts will be sewn into diapers and sent to Word Lutheran Relief.

At the business meeting, the outgoing officers were recognized and applauded for their dedication and service to the CSS W/ELCA.

They were: Vice-president, Kathy Regehr; Secretary, Carolyn Olson; Board Members, Kim Frederking, Dawn Lesiack, and Kathy Steinke.

The new officers and board members elected are: Vice-President, Beth Rockelman; Secretary, Annalee Crotinger; Board members, Loretta Holmes, Kera Jecha and Wendy Hoops.

May the Holy Spirit guide you - Alice Burnett, president

The Holy Spirit was the leader of the 31st CSS W/ELCA convention and guided us through a meaningful weekend of worship, speakers, workshops and business. I had a lot of fun!

I attend Cross of Glory Lutheran Church in Derby, KS, a community of 22,000 people, just south of Wichita. The congregation is small with an average attendance of 25 persons at Sunday worship service.

We do not have a called pastor or an interim. We are served each Sunday by retired pastors who live in the area.

Cross of Glory recognizes the need to “do church different”. My congregation is one of many ELCA churches who face the same dilemma.

I am glad we passed a resolution at convention regarding the need to encourage church leaders to enroll in the Parish Ministry Education and Associate Program or attend seminary.

Now, our job is to recognize the gift of leadership in others as well as yourself. Pray, seek them out and encourage them to accept the call of the ministry.

aburnett@cox.net

Help us plan for 2019 convention —

Beth Rockelman, vice-president



How many conventions have you been to? I have attended my fair share of both CSS W/ELCA and Triennial conventions and gatherings. And now I am privileged to coordinate our 2019 CSS W/ELCA convention in Wichita, KS.

While it may seem way off in the future, planning has already begun. I will be communicating very often with many of you fine, talented ladies to help accomplish our desired goals. It's all in the details, right?

Let us use our fruits of the Spirit in all that we do, say or think. By faith and the grace of God, let us support one another in our callings. Let us come together at conventions, big or small, to be embraced by the love of God, filling our spiritual needs.

bethr@midamerica.net



Whereas: The Central States Synod and the ELCA are facing a “retirement tsunami” and graduations from ELCA seminaries are inadequate to meet the needs of congregations.

Whereas: Not all congregations will be able to support a full-time ordained pastor.

Whereas: ELCA congregations in Kansas and Missouri are experiencing a crisis in lack of pastoral leadership throughout the Central States Synod.

Whereas: The Central States has the Parish Ministry Education and Associate Program.

Whereas: Classes are offered either locally or on-line making them easier to take.

Whereas: Congregations are encouraged to look inside their congregations for candidates for the PME and PMA program.

Be it resolved: that Central States Women encourage women, who are called, to pursue enrollment in programs that prepare ministers of word and service or seminary study to pursue ordination.

Be it resolved: that God has provided sufficient wisdom, fortitude, patience and grace for those called to discern God's direction and to respond to God's call.

Be it resolved: that it is the responsibility of all to encourage and support those gifted to prepare for ministry of the gospel.

~~~~~

The PME/A program has a two-fold purpose. The first is to provide educational opportunities and classes for lay members of the synod to deepen their understanding of Lutheran theology, worship and preaching, mission and outreach. Those who complete the program receive certificates and are recognized at the synod assembly.

The second is the associate program which invites PME graduates to be commissioned as PMAs to serve alongside rostered leaders in their own congregations or, with the approval of the bishop, enter into a covenant relationship to serve a congregation or parish as the primary pastoral leader. For more information, you may go to the website:

[css-elca.org/pma](http://css-elca.org/pma)



31st CSS W/ELCA  
CONVENTION

RESOLUTION

#1

July 2018

## 2018-19 CSS W/ELCA board



*The 2018-19 CSS W/ELCA officers and board members were installed during the Sunday worship service, July 15. They are left to right:*

### **KARA JECHA - Board member, Cluster Liason**

Kara is a cradle Lutheran and grew up in Peace Lutheran of rural Albert, KS. She now is a member of Hope Lutheran, Rush Center, KS.

She is 1/3 of the Team Jecha (pronounced Yek-uh) with hubby, Jay, and buddy Jesus. She lives in Timken, in west central Kansas. God has blessed them with four grown sons, two granddaughters, and a soon-to-be born grandson.

### **BETH ROCKELMAN — Vice-president**

Beth previously served as secretary for two terms. She was born in Missouri and raised on a grain and dairy farm with her brother. She worked in the Family Support Division of the Missouri Dept. of Social Services before she retired. Her Lutheran ancestry can be traced back four generations. She has been a Sunday School teacher and choir member, and held all offices of her W/ELCA unit. She serves on several W/ELCA committees.

### **ALICE BURNETT — President**

Alice is beginning her second year as president. She previously was a board member. She leads two separate Bible studies each week in her community. She attends Cross of Glory Lutheran Church in Derby, KS.

### **VICKIE DONNELL—Treasurer**

Vickie is in her first year as treasurer and admits she is still very much in the “learning mode”. She said, former treasurer, Rhonda Templing, has been “the best e-mail friend ever” and is always available to answer questions.

“I enjoyed meeting many of you at the convention and getting to put faces with the names of the people that I [have] communicate[d] with.”

### **ANNA PROCKISH - Board member, Mission Growth**

Anna and her husband, Tim have been married for 37 years and live in Salina. They have a married son, a daughter and a

grandson. She is a 1982 graduate of Bethany College, Lindsborg, KS.

Anna currently is investing in real estate rehabbing and part-time child care. Her home churches include those in Savonburg, Olsburg, Lindsborg and Salina. She is the church council secretary for Redeemer Lutheran, and is active on the Altar Guild, Evangelism Outreach, and Wednesday night activities.

She is beginning her fourth year as a board member and will lead Mission Growth (Stewardship).

### **ANN HOOVER - Board member**

Ann and her husband, Brian, live in Stover, MO. She is a “church lady” of Trinity Pymont. She is employed as a physical therapist assistant at Lake Regional Hospital, Osage Beach, MO.

“I attended my first convention in St. Joseph, MO in 2012 and was hooked. Although I am relatively new, ‘my ladies’, as I call my W/ELCA sisters, are always ready to help or answer a question.”



### **WENDY HOOPS - Board member**

Wendy was appointed to a one-year term because there was not a nomination for the third board member vacancy. She will be in charge of FACEBOOK postings.

Wendy, her husband, and their two young children live in Chanute where her husband is a school administrator. Kara is a former fifth grade teacher and elementary school library media specialist. She now is a stay-at-home mom.

Kara was raised as a Catholic and married an ELCA Lutheran. She has served as president for her local W/ELCA unit. The Hoops couple are co-sponsors for the church’s youth group.

“I look forward to serving on the board, meeting new friends and learning all I can.”

**Not pictured**

### **LORETTA HOLMES - Board member**

Loretta has been married for 43 years and has a grown son and daughter, and three grandsons. She is a member of Resurrection Lutheran in Haysville, KS., where she has lived for over 50 years.

Loretta is active in Altar Guild and W/ELCA, and is a YMT leader, Sunday School Coordinator, and the Ark River Valley Cluster Coordinator.

### **ANNALEE CROTINGER - Secretary**

Annalee Crotinger lives in Otis, KS, with her husband, Michael. They have two grown sons. She is a member of Trinity Lutheran in Otis and currently is the church council secretary. She also serves as a lector, communion assistant and on the Altar Guild.



## Reach out to others —

*Rev. Dinah Dutta, executive board member*



### *Blessings to you in the name of our Lord Jesus Christ—*

I wish to thank each of you for your leadership and dedication to make our CSS W/ELCA 2018 Convention a wonderful success.

I encourage each of you as I encourage myself to be in touch with your prayer partners and to start immediately and intentionally to reach out to at least one

new sister and invite her to our 2019 convention in Wichita.

I feel blessed by each one of you and I shall continue to keep all of you close to my heart in prayer. Please keep me also in your prayers

[pastordutta@gmail.com](mailto:pastordutta@gmail.com)

## In-kind offerings benefit service agencies —

*Ann Hoover, board member*

Once again the ladies attending convention showed great generosity in helping our in-kind recipients, Citizens Against Domestic Violence (CADV) and Lamb House. Each agency received \$338.25 (12.5% of love offering) and \$300 or 50% of the in-kind cash donations.



The value of the goods donated was \$617 and it was divided among the two agencies.

For over 20 years, CADV has provided a 24-hour hotline, crisis intervention, and a safe shelter to provide emergency housing and support for services for women and children.

Lamb House serves more than 10,000 people each year by providing clothes, food and financial assistance to pay for propane, electric and water bills, rent and medications. It also has a "burn closet" for which it collects small kitchen appliances, towels, bedding and dishes for those who are starting over.

[jstmom@hotmail.com](mailto:jstmom@hotmail.com)

### FRIDAY EVENING WORSHIP



All of these are  
secured websites

Central States Women website:

[www.csswomenofthelca.com](http://www.csswomenofthelca.com)

Central States Women Facebook:

[www.facebook.com/CSSwomenofeca/](https://www.facebook.com/CSSwomenofeca/) (this is not a typo—it is eca)

National W/ELCA website:

[www.womenofthelca.org](http://www.womenofthelca.org)

[www.facebook.com/WomenoftheELCA](https://www.facebook.com/WomenoftheELCA)

[www.pinterest.com/womenofthelca](https://www.pinterest.com/womenofthelca)

[www.twitter.com/WomenoftheELCA](https://www.twitter.com/WomenoftheELCA)

[www.youtube.com/user/ELCAVideo#g/u](https://www.youtube.com/user/ELCAVideo#g/u)

## ***Please help us communicate — Anna Prockish, board member***

I need to apologize if I offended anyone with my June *WITW* article. I heard from a woman who felt I portrayed our members in a negative light regarding communication technology and media savvy. We talked and I asked for her forgiveness.



My article was based on the number of members who view or “like” our Facebook page, subscribe to *WITW*, know about or have visited our CSS W/ELCA website, or the national website, and also what I hear or observe when I ask members if they are aware of and take advantage of communication and resource tools.

At our CSS W/ELCA board meetings, we talk about how to improve communication with our sis-

## ***W/ELCA Cluster coordinators discuss unit challenges —***

***Kara Jecha, board member***

An amazing group of Cluster Coordinators and interested ladies met with CSS W/ELCA Board President Alice Burnett and Kara Jecha in a roundtable discussion on Saturday at the convention. Discussion centered around unit activities, projects and challenges. Alice explained it is important to maintain an up-to-date report the number of active W/ELCA units in our synod, as that is the number upon which our allotment of Triennial voting members is calculated. Based on the last calculation, CSS W/ELCA will have six voting members at the next Triennial, July 14-16, 2020, in Phoenix, AZ.



Cluster and congregation contacts were updated and Kara will develop an email address list to keep Cluster Coordinators up-to-date on WELCA activities.

Please send information about your cluster’s activities to Kara. We are here to serve you.

[churchlady@gbta.net](mailto:churchlady@gbta.net)

ters. We are taking steps to ensure every church has a contact person, or the church, will at least, receive and disseminate information (ie. *WITW*, as well as other W/ELCA mailings). WE hope you will help us in our quest to improve and expand communication among all our sisters in Christ. We ask for your prayers as we begin a new CSS W/ELCA board year.

[aprock7778@gmail.com](mailto:aprock7778@gmail.com)

## ***Financial Pearls — Vickie Donnell, treasurer***

The financial picture for the convention is not yet complete as we are awaiting a final invoice from the conference center at print deadline. However the final offering report is complete.



The total Love Offering gifted was \$2,450.25. That offering will be shared, with 50% going to church wide, 25% to CSS W/ELCA treasury, and 25% divided between the two agencies designated to receive the in-kind donations. The two agencies also will receive one-half of the \$600 received as In-kind cash donations. Lamb House and Citizens Against Domestic Violence each received \$638.25.

The basket silent auction received \$524 for the Barbara Nelson fund. The “little” miscellaneous auction received \$299 for the educational scholarship fund, which is available to ELCA members for post-secondary education. The Barbara Nelson fund is awarded as scholarships to attend the 2020 W/ELCA Triennial Gathering.

I will be getting semi-annual communications out to all the units and clusters in the near future that will summarize the monetary and in-kind gifts received since Feb. 1, 2018. Those who send contributions and provide an email address will receive a reply message stating the gift has been received. Those who do not provide an email address will receive that information in the mailings.

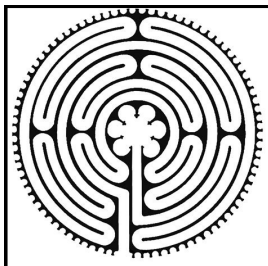
Saturday evening, Lisa Youngquist shared a real-time message that Camp Tomah Shinga needed more picnic tables to accommodate the sudden increased number of campers. Within a few minutes, \$602 was collected from those at the convention. The offering was forwarded to Camp Tomah Shinga.

[vickiedonnell@yahoo.com](mailto:vickiedonnell@yahoo.com)



## ***Labyrinth provided a pathway for prayer, meditation***

Ladies attending the convention had a unique opportunity to experience prayer, meditation and mindfulness of walking a Labyrinth. Kathy Steinke, outgoing board member, was in charge of this very enriching and peace-filled project. She set up the labyrinth in a room



situated away from the busyness of the convention and provided informative pamphlets to guide each walker.

Each participant went on a journey in which she could think about loved ones, distractions or burdens on the

***You show me the path of life. In your presence  
there is fullness of joy... Psalm 16:11***

### ***Thank you***

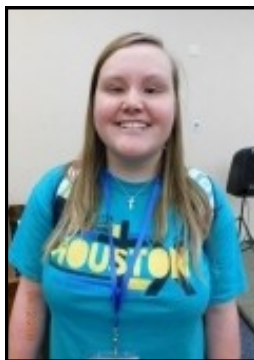
Dear Central States Synod W/ELCA,

Thank you so much for selecting me to be the recipient of the [\$800] education scholarship. I have thoroughly enjoyed being such a big part of W/ELCA through the last several years. The support this group has shown me is truly amazing. I will be forever grateful as I continue my studies at Missouri State.

Thank you and God Bless.

The application form for the 2019 educational scholarship will be printed in the December 2018 *WITW*. Those eligible to apply must be a female member of an ELCA congregation and be seeking a post-high school education. The award is a one-year non-renewable scholarship, not to exceed \$1,000.

(Editor's note) Ericka often attends conventions with her mother, Lisa, who served as CSS W/ELCA president from 2015-2017.



**Ericka Younquist**

way in, be open to the grace and love of God at the center, and, return uplifted, blessed and renewed.

Labyrinths are ancient spiritual pathways followed as a support for prayer. They provide a way in which to slow down...of being mindful...of spending time with God. A labyrinth has only one path that always leads to the center. You cannot get lost. Just stay on the path and follow it in your own time.

In today's world, with so many demands and distractions coming at us from all directions, the labyrinth is one tool we can utilize to help us slow down, center ourselves, and walk with our Lord and Savior.

### ***First-time attendees receive grants***

Women who have not previously attended a CSS W/ELCA convention may apply for a grant to pay for registration costs. The 2018 convention recipients were: Bess Jensen, Rush Center, KS, Prairie Angels Cluster; Pari Ford, Lindsborg, KS, Smoky Valley Cluster; and Cindy Wedlington, Hanover, KS, God's Sonflowers Cluster.



## Kansas Cluster meetings

**The Smoky Valley Cluster** met April 7 at Redeemer Lutheran Church, Salina, KS. The theme was that of the upcoming convention, "The Road To..."

Thirty-four persons representing 11 churches attended. Kathy Regehr, board member and W/ELCA synod vice-president, gave a report.

Rev. Pastor David Strommen of Redeemer lead the Bible study and involved the group with questions reflecting on the challenges we face today as we follow Jesus.

Lori Blake, executive director of Child Advocacy and Parenting Services, Salina, KS explained the organization's mission to strengthen families and improve the lives of children.

Following a delicious lunch served by Redeemer, the day concluded with a worship service and communion. An offering was collected and divided between CAPS and the CSS W/ELCA.

**The Sunflower Cluster** will meet Sat., Sept. 22 at Our Savior's Lutheran Church, Topeka, KS. Items and in-kind donations will be collected for Silverbacks, Inc. It is a grass roots organization, composed of volunteers, which helps those who need

help to stand on their own. The registration deadline is Sept. 10. Contact Pat Dunavan to make your reservation, 785-246-2123, or [prairies@aol.com](mailto:prairies@aol.com).



*These ladies from Messiah Lutheran, Springfield, MO attended the convention as a result of the recruitment efforts of Vickie Donnell, CSS W/ELCA treasurer, and many of those pictured who are former synod officers and/or board members.*

## Central States Synod Women of the ELCA Cluster coordinators

### Amazing Women

Wilma Pifti  
1471 Wilton Lane  
St. Louis, MO 63122-6942  
314-825-0389  
[wprifti@att.net](mailto:wprifti@att.net)

### Ark Valley

Loretta Holmes  
568 Turtle  
Haysville, KS 67060  
316-524-0960  
[lholfmes8@sbcglobal.net](mailto:lholfmes8@sbcglobal.net)

### Disciples of the Plains

Carolyn Mott  
143 Fourth St.  
Agra, KS 67621  
785-638-2869  
[cmott@ruraltel.net](mailto:cmott@ruraltel.net)

### God's Sonflowers

Cindy Wadlington  
107 South Denver  
Hanover, KS 66945  
785-713-1079  
[littlebluekansagal@yahoo.com](mailto:littlebluekansagal@yahoo.com)

### Heartland

Sarah Dunning  
1602 Santa Fe  
Atchison, KS 66002  
913-367-4636  
[sdunning7147@att.net](mailto:sdunning7147@att.net)

### Mid-Missouri

Janice Gerken  
36281 Renken Rd, Box 24C  
Mora, MO 65345  
660-668-3823  
[janicegerken@aol.com](mailto:janicegerken@aol.com)

### Northern Lights

Lynda Tobald  
349 Iron Road  
Glasco, KS 67445  
785-614-4073  
[johnntobald@gmail.com](mailto:johnntobald@gmail.com)

### Ozark Mountain

Madeline Friberg  
3333 Southlyn Place  
Springfield, MO 65804  
417-890-1241  
[frebe22@aol.com](mailto:frebe22@aol.com)

### Post Rock

Rhonda Templing  
234 NW 210 Road  
Hoisington, KS 67544  
Ph: 785-483-9402  
[rtemp@russellsks.net](mailto:rtemp@russellsks.net)

### Prairie Angels

Sue Schonhaler  
1942 250th Ave  
Hays, KS 67601  
785-628-1297  
[RASCHON@rural.net](mailto:RASCHON@rural.net)

### Revelation

Gloria Martin  
2283 E 360th  
Herington, KS 67449  
785-983-4482  
[gloria.martin@fbfs.com](mailto:gloria.martin@fbfs.com)

### Smoky Valley

Marty Ryan  
914 S. Santa Fe  
Salina, KS 67401  
785-827-4282  
[martyryan@cox.net](mailto:martyryan@cox.net)

### SE KC Metro

Paula Simonich  
6050 Broadmoor St. Apt 113  
Mission, KS 66202  
913-449-0734  
[psimonich@hotmail.com](mailto:psimonich@hotmail.com)

### SE Missouri

Dee Cannon  
2030 Sherwood  
Cape Girardeau, MO 63701  
573-335-2983  
[deecann@charter.net](mailto:deecann@charter.net)

### Sunflower

Mary Liby  
25680 S Urish Rd  
Osage City, KS 66523  
785-817-3942  
[lmfarms@embarqmail.com](mailto:lmfarms@embarqmail.com)

### Tri-State

Ardythe Cederberg  
301 E Commercial  
Oberlin, KS 67749  
785-475-2535  
[ajceder301@gmail.com](mailto:ajceder301@gmail.com)







**OFFICERS AND BOARD 2018-2019**  
**CENTRAL STATES SYNOD WOMEN OF THE ELCA**

**Executive Board Member:** Rev. Dinah Dutta  
 1000 Colonial Circle  
 Lawrence, KS 66049  
 785-979-8362  
[pastordutta@gmail.com](mailto:pastordutta@gmail.com)

**Vice President:** Beth Rockelman  
 2103 Blair Drive, Apt. E  
 Jefferson City, MO 65109  
 Ph: 573-761-0722; 573-782-4759  
[bethr@midamerica.net](mailto:bethr@midamerica.net)

**Treasurer:** Vickie Donnell  
 4672 E Hidden Oak Place  
 Springfield, MO 65802  
 Cell: 417-839-8862  
[vickiedonnell@yahoo.com](mailto:vickiedonnell@yahoo.com)

**Board Member:** Loretta Holmes  
 568 Turtle  
 Haysville, KS 67060  
 Ph: 316-524-0960  
[lholfmes8@sbcglobal.net](mailto:lholfmes8@sbcglobal.net)

**Board Member:** Wendy Hoops  
 408 South Country Club Road  
 Chanute, KS 66720  
 Ph: 620-245-1937  
[wendy.hoops75@gmail.com](mailto:wendy.hoops75@gmail.com)

**President:** Alice Burnett  
 12130 Dove Hill Court  
 Derby, KS 67037-9485  
 Ph: 316-776-2838 or 316-258-7685  
[kaburnett@cox.net](mailto:kaburnett@cox.net)

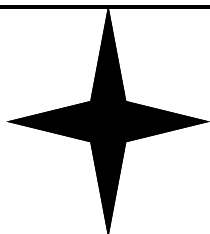
**Secretary:** Annalee Crotinger  
 3633 Avenue N  
 Bison, KS 67520  
 Ph: 785-387-2454H; 785-387-2336  
[crotingera@usd403.org](mailto:crotingera@usd403.org)

**Board Member:** Ann Hoover  
 25370 Little Buffalo Rd  
 Stover, MO 65078  
 Ph: 573-377-6389  
[jstmom@hotmail.com](mailto:jstmom@hotmail.com)

**Board Member:** Anna Prockish  
 2430 Village Lane  
 Salina, KS 67401  
 Ph: 785-404-2487  
 Cell: 785-212-0685  
[aprock7778@gmail.com](mailto:aprock7778@gmail.com)

**Board Member:** Kara Jecha  
 117 Pine Street  
 Timken, KS 67575  
 Ph: 785-355-2000  
 Cell: 785-372-1637  
[churchlady@gbta.net](mailto:churchlady@gbta.net)

**WITW Newsletter Editor:** Mary Liby  
 25680 S Urish Rd  
 Osage City, KS 66523  
 Ph: 785-528-3434  
 Cell: 785-817-3942  
[lmfarms@embargmail.com](mailto:lmfarms@embargmail.com)



*No eye has seen, no ear has heard,  
 no mind has conceived what  
 God has prepared for those who love him.*

**1 Corinthians 2:9**



### Walking in the Word

The Newsletter written and published by the  
Central States Synod Women of the ELCA.

**Keep up to date with things going on with the CSS W/ELCA.**

**Subscriptions available by email alert or USPS**

Name: \_\_\_\_\_

Address: \_\_\_\_\_

City: \_\_\_\_\_

State: \_\_\_\_\_ Zip: \_\_\_\_\_ Date: \_\_\_\_\_

Email: \_\_\_\_\_

I prefer to receive Walking in the Word by:

Email \_\_\_\_\_

USPS \_\_\_\_\_

**Return form to:**

***Vickie Donnell  
4672 E Hidden Oak Place  
Springfield, MO 65802  
vickiedonnell@yahoo.com***



Official Newsletter of  
The Central States  
Women of the ELCA  
25680 S Urish Rd  
Osage City, KS 66523-9014